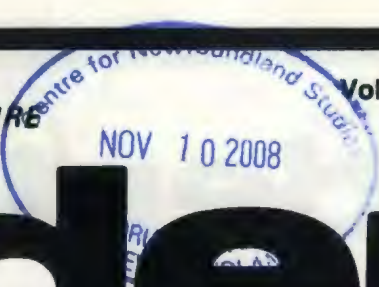


the

PAST PRESENT FUTURE



Vol. 7, No. 3, November, 1982
Price .75 cents

trident

ANNUAL MEETING 1982



The new Executive of the Newfoundland Historic Trust elected at the 1982 Annual Meeting are from left to right: (Seated) Ted Rowe, Past-President; Canon George Earle, President; (Standing): George Courage, Treasurer; David Kelland, Paul Thorburn, Vice-Presidents; and Jane Sproule-Thompson, Secretary. Missing from photo is Mary Chaulker, Vice-President.

The Annual General Meeting of the Newfoundland Historic Trust was held on Wednesday, October 27 at the Board Room of the Newfoundland Museum at 8:00 p.m. Approximately 30 members were in attendance.

The meeting consisted of a series of annual reports from the President, Treasurer, and committee chairpersons. Those who presented written reports were the St. John's Day Committee, the Co-operating Association, Programs, the Museum Shop, and the Membership Committee.

The Co-operating Association and the Museum Shop committee reports included extensive financial statements. In both cases sales were up over last year, in the case of the co-operating association by

100%. The reports listed a number of new products developed in the last year.

The Program committee report consisted of a detailed list of coming events for 1982-83. It promises to be a busy one with things like wine-tasting, public lectures, home renovation fair, musical evening in an historical setting, to name but a few. David Kelland, Programs Chairman would welcome any volunteers to help with his committee.

The election of officers produced the following Executive for the coming year:

- President: Canon George Earle
- Vice-Presidents: David Kelland (and Programs Chairman)
- Paul Thorburn (and Trident Editor)
- Mary Chalker

- Treasurer: George Courage
- Secretary: Jane Sproule-Thompson
- Past-President: Ted Rowe
- St. John's Day Representative: Judy Gibson
- Membership: Susan Haedrich
- Gift Shops: Caroline Stone and Bette Anderson
- Co-operating Association Manager: Pam Murphy
- Preservations: Shane O'Dea

An Honorary Life Membership was presented to Gilbert Higgins for his unceasing efforts in heritage-related matters for a long period of time, particularly on the West Coast.

Refreshments were served following the business meeting.

The address was given by Deputy Minister of Cultural Affairs and Historic Resources, Mr. William Frost. He invited input into the formation of a provincial heritage foundation. A committee was formed to meet with government officials on this matter. The committee will consist of Shane O'Dea, Shannie Duff, Ted Rowe and Elmer Ball. The meeting adjourned at 11:00 p.m.

Nancy Cook,
Outgoing Secretary

IN THIS ISSUE:

- A.E. Harris Exhibition
- Hawthorne Cottage
- New Publications
- President's Report
- Museum Gift Shop
- Calendar of Events
- Life Membership Award
- Trident Update

The

PAST PRESENT FUTURE

trident

THE TRIDENT is the quarterly production of the Newfoundland Historic Trust, P.O. Box 5542, St. John's, Nfld., A1C 5W4

EDITOR: Paul Thorburn

PRINTED BY: Jespersion Printing Ltd.

HONORARY LIFE MEMBERSHIP



President George Earle presents Gilbert Higgins of Stephenville with an Honorary Life membership in the Newfoundland Historic Trust.

An Honorary Life Membership in the Trust was presented to Mr. Gilbert Higgins of Stephenville at the Annual Meeting on October 27, 1982. Mr. Higgins has a long and active association with Newfoundland Heritage. He is presently Chairman of the Museum Association of Newfoundland and Labrador and Chairman of the Port aux Port — Bay St. George Heritage Association.

Five other members of this select group, Ted Rowe, Shane O'Dea, Shannie Duff, Jean Ball and Bill Parsons were present at the Annual Meeting to welcome Gilbert Higgins to their ranks. Congratulations!

TRIDENT UPDATE

The June, 1982 edition of the TRIDENT featured a story on Ally O'Brien and the Irish Newfoundland Association classes in the Irish language. On Saturday, October 30, 1982 Memorial University awarded Aloyeius O'Brien an honorary Doctor of Laws (*honoris causa*). Shane O'Dea, University Orator and member of the Trust, proclaimed Ally O'Brien to be an amalgam of science and humanism, a keeper of tales, a bearer of traditions and a true representative of the Freshwater Valley, the area on which the University now stands. Congratulations to Dr. O'Brien on his well deserved honour and recognition.

A. E. HARRIS EXHIBITION

Memorial University Art Gallery plans a major exhibition of work by A.E. Harris in February, 1983. Harris painted and etched in Brigus, C.B., during the early 1930's. In order to make the exhibition as comprehensive as possible, any information TRIDENT readers can provide about Harris would be very helpful. Of special interest are collectors who would be willing to lend Harris work to the Gallery for the period of the exhibition. Please contact Caroline Stone at 754-1903 or 754-1742 (Museum Gift Shop). Thank you.

NEWFOUNDLAND HISTORIC TRUST MUSEUM GIFT SHOP

From the product development and staffing point of view 1981-82 has been a very active year for the Museum Gift Shop. Once again about twenty Newfoundland Historic Trust Members gave generously of their time so that the Shop could stay open seven days a week, from 10-5 Monday to Friday and 10-6 on weekends. Special thanks go to the volunteers who have been with the Shop since it was established in 1979—though its hard to believe that's three years ago now.

During the past year a number of exclusive products were designed for the Shop. An Outport Doll, dressed in a 1900's costume, and a Doll from St. John's, circa 1850, add to the collection of toys. Both dolls were made by Linda Smith. Don Beaubier has worked on a silver necklace based on a Beothuck bone pendent. A full-colour postcard was published to illustrate our province's wildflowers. T-Shirts showing John Cabot's *Matthew* were printed for summer and June Bowden produced enamelled ware featuring Crackerberries. Chandra Chopra translated the *quatrefoil* pattern into a silk scarf and Sylvia Cullum etched some new views of St. John's. Our next projects include weaving based on the colours of the Museum's hooked mats, and two new postcards reproducing marine paintings of the Victorian era. These cards will be partially funded by a provincial Heritage grant as were some of the things listed above.

The Christmas exhibition at the Nfld. Museum is "Quilts", and the Shop will reflect this through books and crafts. A big plus this coming season is Jean Ball's new dollhouse—a replica of Mallard Cottage in Quidi Vidi. This is sure to be popular and will be on display in the Shop November 15th to January 15th. Thank you, Jean!

This summer a student was hired to supplement volunteer help through a federal government employment program, and over the winter part-time staff was obtained the same way.

Mrs. Adele Snyder is joining the Museum Gift Shop Board for the coming

PHOTOGRAPHERS!

Do you have any pictures relating to the heritage or history of Newfoundland and Labrador that you would like published in the TRIDENT?

Pictures can be colour or black and white. Mail to:

Editor, TRIDENT
Newfoundland Historic Trust
P.O. Box 5542
St. John's, Nfld. A1C 5W4

Please provide a brief description of your picture including approximate date and location. Include your mailing address if you wish your print returned. Payment of \$5.00 will be made for each print selected for publication. The judgement of the editor will be final.

MUSEUM GIFT SHOP (Cont'd)

year, to act with Kay MacCullum as the Trust's Representatives. A special evening is planned, and Susan Maunder, the Museum's Registrar will chat with the volunteers about the Museum's collections.

If you would like to be involved as a volunteer at the sales desk or if you can attend an evening get-together, please contact:

Caroline Stone
Co-Manager
Nfld. Historic Trust Museum Gift Shop
754-1742

You would be most welcome!



HOURS:

Monday - Friday 10am-5pm
Saturday - Sunday 10am-6pm



PRESIDENT'S REPORT

1981-1982



Canon George Earle, President of the Newfoundland Historic Trust.

My first year in office has been interesting to me even if uneventful for you. I have called and chaired regular monthly meetings of the Executive and represented the Trust on several occasions. I have pondered often what more I can do, what the Trust is expected to be and to day and am anxious to know more. My year in office began delightfully with a wine and cheese party last December, a joint affair with the Trust and the Opimium Society. I am convinced it needs repeating as it proved very effective for public relations.

Our part in the St. John's day Celebrations in June was significant. I acted as Master of Ceremonies at the Dinner in the University Dining Hall and introduced Gordon Pinsent, a Newfoundlander of Distinction back home to share the spirit. On the following morning, I represented the Trust on the reviewing stand to witness the parade from the Stadium through Water Street and visited inter alia the Murray Premises and City Hall.

On July 15, I shivered with many others on the Tattoo Platform on Signal Hill as we watched the Tattoo in its first performance for 1982 and

inspected the participants afterwards. We are all delighted that the Newfoundland Historic Trust has assumed overall responsibility for the Signal Hill Tattoo Guard.

In August, I visited many settlements in Newfoundland, especially its parks and historic sites. A visit to Trinity was most interesting and exciting and a tour of the Placentia Castle Hill Museum was most impressive. I even got to Cape St. Mary's on a fogless day and saw for the first time the Bird Sanctuary. There is so much to see in Newfoundland; outsiders have known this for a long time and we are just beginning to appreciate it ourselves.

My last jaunt was to Lewisporte for the annual meeting of the Museum Association of Newfoundland and Labrador. I attended the meetings and gave the after dinner speech at the Banquet. It was interesting and good fun.

I am very grateful to the many who have helped me so much in my first year, especially Ted Rowe, my predecessor, Pamela Murphy, Manager of the Co-operating Association and Edna Hall of Parks Canada. Let us look forward to a good year and apply ourselves with diligence to what is expected of us.

G.H. Earle
President

TWO NEW PUBLICATIONS From the Newfoundland Historic Trust

Signal Hill —An Illustrated History

48 p.p., 8.5x7, colour and black and white photo's and illustrations. ISBN 0-919735-02-9, \$7.98 Quality Paperback, ©.

Signal Hill—An Illustrated History was written and produced by Amy Zierler and Cam Mustard under the direction of the Newfoundland Historic Trust, from Research by Parks Canada historians James Candow and Jean-Pierre Proulx, and by Paul O'Neil, Marilyn Dawe, and A.F. King. Amy is a free lance writer for magazines such as *Atlantic Insight* and Cam has had several years experience in graphic art and design.

Continued Page 4

Two New Publications (Cont'd)

Signal Hill—An Illustrated History has been written in a light but informative manner and with the use of numerous photo's and illustrations we have developed a pictorial view of our heritage never presented before in this format. The cover for **Signal Hill—An Illustrated History** is of a painting by J.W. Hayward, an artist and resident of St. John's during the 1800's. Reproduced in colour this painting portrays an era when sheep and horses grazed in fenced-in areas on Signal Hill.

Let your mind travel through the pages of **Signal Hill—An Illustrated History**, as though travelling in a time machine, travel backwards through the colourful past of Historic St. John's and discover the significant role that Signal Hill played in the battles between the French and the English to gain control of the fisheries and the eventual settlement of St. John's. Imagine that first ship sailing through the Narrows, what did those voyagers think of this rugged, unsettled land, and its vast resources of fish, a land that was theirs to claim, a land they fought for and settled, a land we now call ours.

Signal Hill—An Illustrated History takes the reader through the hardships as well as the accomplishments to the modern history of signaling, Marconi's first transatlantic wireless message and Signal Hill's involvement in WW 1 and WW 2. Nearly three centuries later Signal Hill became a National Historic Park for the colourful part she played in the settlement and growth of North America's Oldest City—St. John's.

The Viking Sod Hut Village

8 p.p., 17x11, colour, child's cut out, \$3.98 ©

This delightful cut out village designed by Newfoundland artist Jean Ball will be enjoyed by children of all ages. Jean painstakingly reconstructed the Sod Hut Village located in L'Anse aux Meadows National Historic Park to a smaller scale and handpainted them with soft water colours. The format of this book will provide many hours of entertainment as well as being educational.

The story, written by Ellen Earles, en-

THIS YEAR WITH THE TRUST

Calendar of events for the Newfoundland Historic Trust, 1982-83.

Information on times and locations will be given in future issues of the TRIDENT and through membership mailings. (Have you renewed your membership yet?)

The Programme Committee would welcome help with any of these suggestions for any activity you'd like to see. Contact Dave Kelland, 753-5999 (evenings) or Pam Murphy 753-9262 (days).

November 18

Release of the publication **Signal Hill—An Illustrated History** by Parks Canada and Newfoundland Historic Trust Co-operating Society.
Members Reception.

November 25

Lecture on "The Vernacular Architecture of the English West Country" by Robert Machin. Sponsored jointly with the Newfoundland Historical Society.
8 p.m. A.C.C. Lecture Room.
Refreshments.

December 8—12

A Wine Tasting in conjunction with the Opium Society.

A Victorian Christmas: an exhibition of the furnishings and other reminders of a Christmas at the turn of the last century.

Plus an old fashioned Christmas Tree: at the Newfoundland Museum on Duckworth Street with a decorating party for member's children.

February 21-27

Heritage Week
"A Little Night Music." A members reception in an historic setting.

Lecture and film series exploring a variety of aspects of Newfoundland culture and history.

Topics—The Newfoundland Salt Box. (to be confirmed, may include Nfld.

Cooking, Nfld. Music, Early Bird Art and Artists.

March 25, 26, 27

First Annual Old Home Renovation Fair
A market place of sources, materials and skills of particular interest to those renovating, restoring or just learning to be with older homes.

- Displays ● Materials ● craftspeople
- Films ● Demonstrations
- Refreshments

June 4, 5

Old St. John's, House and Garden Walking Tour and Afternoon Tea

June 24, 25, 26

St. John's Day
Antique and collectibles auction
Historic Building Tours
Parade Float

JULY

Member's Bus Tour and Luncheon
Tour of historic St. John's and environ with an architectural emphasis.

Signal Hill Tattoo

Parks Canada & N.H.T. Co-operating Association Members' reception after 1st performance.

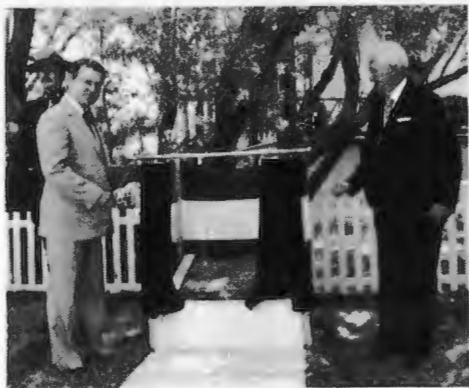
AUGUST

Vacation... but,
Don't miss us at the Regatta!



A NEW DOLLSHOUSE by St. John's artist Jean Ball will be a Christmas attraction at the Museum Gift Shop from November 15th 'til January 15th.

HAWTHORNE COTTAGE UNVEILING CEREMONY



Mr. Roger Simmons, M.P. and Judge Rupert Bartlett unveil a plaque commemorating Hawthorne Cottage, the Brigus home of Captain Bob Bartlett, as a building of National Historic Significance. Judge Bartlett is a nephew of Captain Bartlett.

On Sunday, July 2, 1982, *Hawthorne Cottage*, the Brigus Home of Captain Bob Bartlett, was commemorated as a building of national historic and architectural significance. While the building has received considerable attention because of its association with the famous sealer, fisherman and Arctic explorer, the Cottage is in its own right significant as an example of traditional North American architecture.

The building is a hip roofed, rectangular shaped structure, one and a half stories high, with clapboard exterior and stone foundation. The original part of the house was built around 1830 in the Makinson's area for John Leamon and was later moved to its present location as recorded in the ballad "Squire's Leamon's House Warming."

Approximately five hundred people attended the historic occasion including the Lieutenant-Governor and Mrs. Paddon, representatives of the federal, provincial and municipal governments, members of the Bartlett family, local clergy, representatives from youth organizations, invited guests and the general public. Dr. Noel Murphy, Newfoundland and Labrador's representative on the Historic Sites and Monuments Board of Canada chaired the proceedings. Under a hot, sunny July day he introduced the platform party which

consisted of the Honourable Dr. W.A. Paddon, C.M., M.D., Lieutenant-Governor of Newfoundland and Labrador; Mr. Roger Simmons, M.P., representing the Honourable John Roberts, P.C., M.P., Minister of the Environment; Mr. Randy Collins, M.H.A., representing Premier A. Brian Peckford; His Worship Harrison Fry, Mayor of Brigus; Judge Rupert Bartlett, nephew of Captain Bob Bartlett; Father Brendan McCarthy; Mr. Bill Parsons, President of the Conception Bay Museum; Mr. Neil Munro, Assistant Director, Parks Canada; Miss Edna Hall, Area Superintendent, Historic Parks and Sites, Newfoundland; Major Donald Barter, Private Secretary to Dr. Paddon; and Chief Supt. W.W. Schramm of the RCMP.

Following an account of the Cottage's history by Dr. Murphy, the invited guests and general public were addressed by Mayor Fry and Mr. Collins. The final speaker was the Minister of Environment's representative, Roger Simmons, who invited Judge Bartlett to join him in unveiling the plaque which is located on the grounds of the Cottage. The text for the plaque reads as follows in both official languages of Canada:

Hawthorne Cottage/Cottage Hawthorne
Probably built in the early 1830's for John Leamon, a local merchant, Hawthorne Cottage was originally located 10 kilometres away. Although an

unusual design for Newfoundland, this cottage in the picturesque mode provides a good example of a gentleman's modest suburban residence in contemporary Eastern British North America. The garden setting and ornate verandah attached to a low one and a half-storey structure were standard elements of this building type. Between 1885 and 1946 Hawthorne Cottage was the Brigus Home of Captain Bob Bartlett who served as ship's Captain on a number of early Arctic expeditions.

Father Brendan McCarthy was called upon by Doctor Murphy to say a Prayer of Dedication. A young Grade 5 student was then invited to the platform to receive due recognition for a job well done. Young George Forward of Brigus Academy proudly accepted the prize as winner of the essay contest entitled, *Why Hawthorne Cottage should be declared a National Historic Site*. With the conclusion of the ceremony now at hand, Robert Green and Michael Herriot played *Ode to Newfoundland*.

Following the official ceremony guests toured the grounds of the Cottage and signed the Bartlett guest books which would record for future years all those who attended the events. From the grounds of Hawthorne Cottage all were invited to attend a reception at the Royal Canadian Legion hosted by the Women's Auxiliary of that organization.

Mary Devine
Parks Canada



Two New Publications (Cont'd)

courages children to let their imaginations run wild as he or she sails across the Atlantic in their knorr (longboat). Landing at L'anse Aux Meadows, they can build their own sod huts. The adorable Viking figures allow children to play out their fantasy and give them more insight as to how the Vikings actually lived.



Any of the Trust publications can make ideal Christmas gifts. Order by mail or pick them up at the Signal Hill Interpretation Centre from Pam Murphy, 753-9262.

Newfoundland Historic Trust Book Order Form

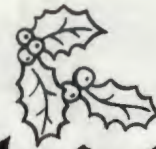
Signal Hill—An Illustrated History.....	\$7.98 × ____ = \$
The Viking Sod Hut Village.....	\$3.98 × ____ = \$
A Gift of Heritage.....	\$7.00 × ____ = \$
10 Historic Towns.....	\$7.00 × ____ = \$
	Sub-Total \$
	Shipping & Handling \$1.50
	TOTAL (Cheque or Money Order) \$

Mail To:
 Newfoundland Historic Trust
 P.O. Box 5542
 St. John's, Nfld. A1C 5W4

Your Address:
 Name: _____
 Street: _____
 City: _____ Prov: _____

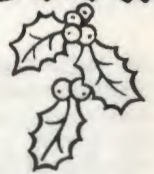
NEWFOUNDLAND
 HISTORIC TRUST

MUSEUM GIFT SHOP



Christmas

Gift Ideas



Ms. Mary Devine
 4 Gower Street
 St. John's, Nfld.
 A1C 1N1

